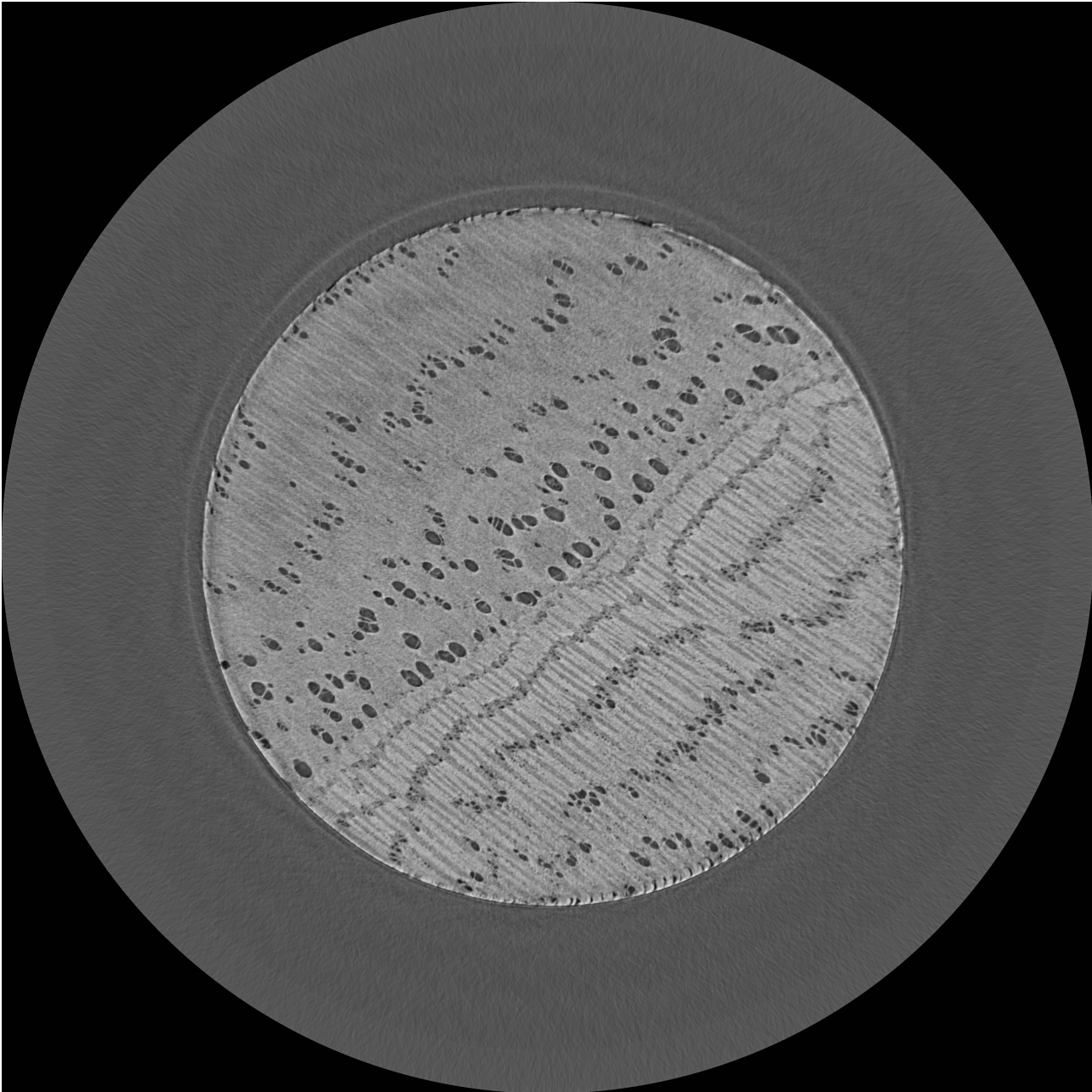


Reconstruction report



Slice: 999

Session

Sample name woodZoom
User Rajmund Mokso
Acquisition software version 3.41.13.0
Machine ID dtu

Scan

Scan description
Time 2024-08-26 14:34:45.163
Number of projections 2001
Total exposure time 4002.0 s
Step size 0.18 degrees
Multirevolution False
Hardware-based ring correction False

Source

Spot center 0.0 um
Spot height 20.0 um
Spot width 60.0 um
Power 154.3 W
Voltage 60000.0 V
Filter material
Filter thickness 0.0 mm

Camera

Name GSense XL
Exposure time 2.0 s
Gain 2
Averages 1
Binning (1, 1) px
Pixel size (after binning) 15.99 um
Region of interest (0, 1048) - (4095, 3047)

Initial stage positions

Camera beam	849.946 mm
Camera transverse	0.001 mm
Object align bottom	0.301 mm
Object align top	-0.438 mm
Object beam	155.151 mm
Object rotation	0 degrees
Object vertical	201.794 mm

Geometry

Source object distance (R1)	155.1510009765625 mm
Source detector distance (Rtot)	849.9459838867188 mm
Object detector distance (R2)	694.7949829101562 mm
Magnification	5.48
Effective propagation distance	126.83 mm
Effective pixel size	0.002918849312194976 mm
Offset	-0.0 mm
Offset scan	False
Localized scan	False

Preprocessing

Normalization False

Phase retrieval

Method	Paganin
delta	3.00e-07
mu	500 m ⁻¹
Energy	10000 eV

Reconstruction

Maximal slices	0 - 1999
Reconstructed slices	0 - 1999
Maximal region of interest	(0, 0) - (4254, 4254)
Reconstructed region of interest	(0, 0) - (4249, 4249)
Reconstructed image size	(12405.0, 12405.0) um
Method	FDK
Centershift at object	-0.2306 mm
Tilt	0.013 degrees
Beamhardening cupping factor	0
Drift corrected	False
Image rotation	0 degrees
Reconstruction software version	master_fc120ed_2024-08-21_12.41