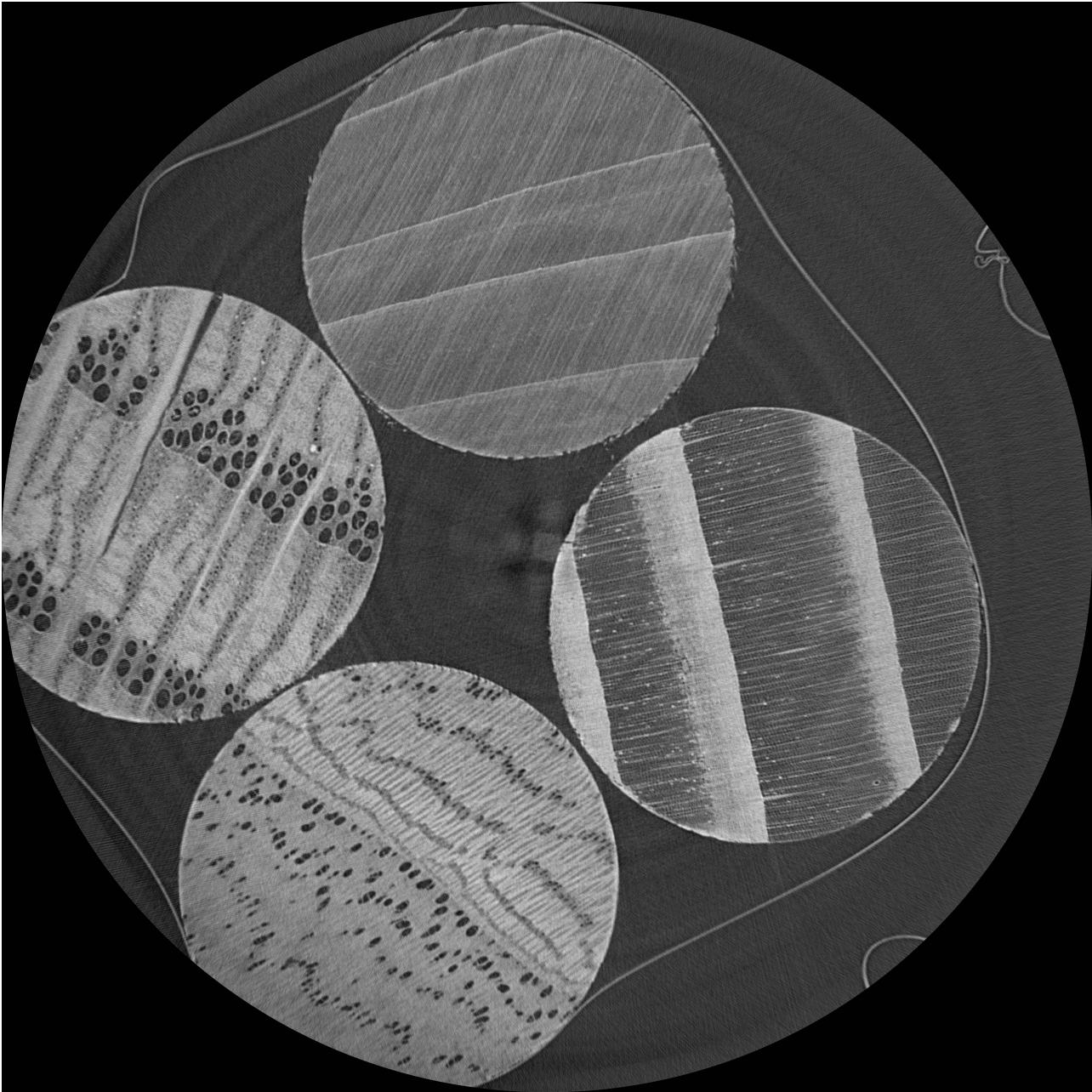


# Reconstruction report



Slice: 999

## Session

Sample name woodM  
User Rajmund Mokso  
Acquisition software version 3.41.13.0  
Machine ID dtu

## Scan

Scan description  
Time 2024-08-26 12:51:25.953  
Number of projections 2000  
Total exposure time 2000.0 s  
Step size 0.18 degrees  
Multirevolution False  
Hardware-based ring correction False

## Source

Spot center 0.0 um  
Spot height 20.0 um  
Spot width 60.0 um  
Power 154.3 W  
Voltage 60000.0 V  
Filter material  
Filter thickness 0.0 mm

## Camera

Name GSense XL  
Exposure time 1.0 s  
Gain 2  
Averages 1  
Binning (1, 1) px  
Pixel size (after binning) 15.99 um  
Region of interest (0, 1048) - (4095, 3047)

## Initial stage positions

Camera beam 520.0 mm  
Camera transverse 0.0008 mm  
Object align bottom -1.202 mm  
Object align top -0.938 mm  
Object beam 155.14 mm  
Object rotation 0 degrees  
Object vertical 201.795 mm

## Geometry

Source object distance (R1) 155.13999938964844 mm  
Source detector distance (Rtot) 520.0 mm  
Object detector distance (R2) 364.86000061035156 mm  
Magnification 3.35  
Effective propagation distance 108.85 mm  
Effective pixel size 0.004770554490603784 mm  
Offset -0.0 mm  
Offset scan False  
Localized scan True

## Preprocessing

Normalization False

## Phase retrieval

Method Paganin  
delta 9.00e-07  
mu 500 m<sup>-1</sup>  
Energy 10000 eV

## Reconstruction

Maximal slices 0 - 1999  
Reconstructed slices 0 - 1999  
Maximal region of interest (0, 0) - (4175, 4175)  
Reconstructed region of interest (0, 0) - (4175, 4175)  
Reconstructed image size (19922.0, 19922.0) um  
Method FDK  
Centershift at object -0.1868 mm  
Tilt 0.013 degrees  
Beamhardening cupping factor 0  
Drift corrected False  
Image rotation 0 degrees  
Reconstruction software version master\_fc120ed\_2024-08-21\_12.41